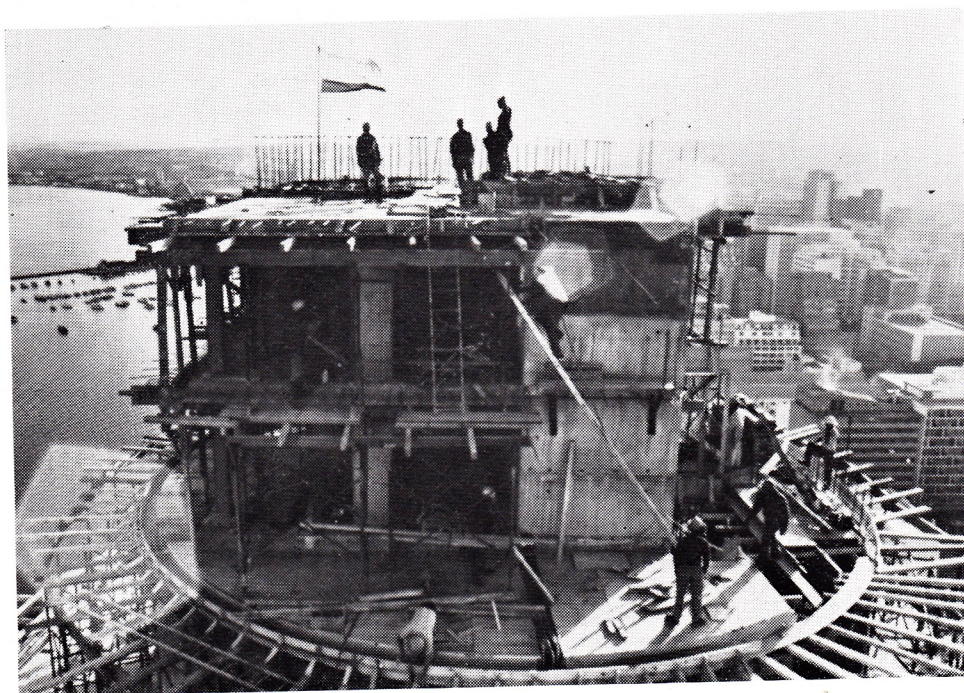




MAILSHIPS: a hundred years of Cape Castles

■ Autumn this year marks the one hundredth anniversary of the Castle ships' entry into regular service to the Cape. First to arrive there in 1872 was the Walmer Castle. (See letter, page 26.) In our picture (left), taken in Southampton in late September, two of the modern Castles—Pendenis Castle and Southampton Castle—form an appropriate background for the busy pontoons of the Southampton Boat Show. Picture: Roger Quilter, Evening Echo.



PROPERTY: John Ross House progress pictures

■ John Ross House, the group's massive property development on the Durban waterfront, now forms one of the striking landmarks of the city's skyline. At left, centre: the South African flag is raised above the final tower structure during the topping-out ceremony in May this year. The harbour lies to the left of this view.

■ Lower left: the curved front of John Ross House is capped by a short tower with a revolving restaurant. This view shows cladding at an advanced stage. It was taken from the South Beach quarter on August 8.

